

Contempo College

RTO Code: 45720 | CRICOS CODE: 03933H

International Student Pre-Departure Handbook 2026

Your essential guide to studying and living in Perth, Western Australia.

Contact & Key Information

Location

Level 3, 379 Hay Street, Perth WA 6000

Phone


1300 764 661
08 6150 2138

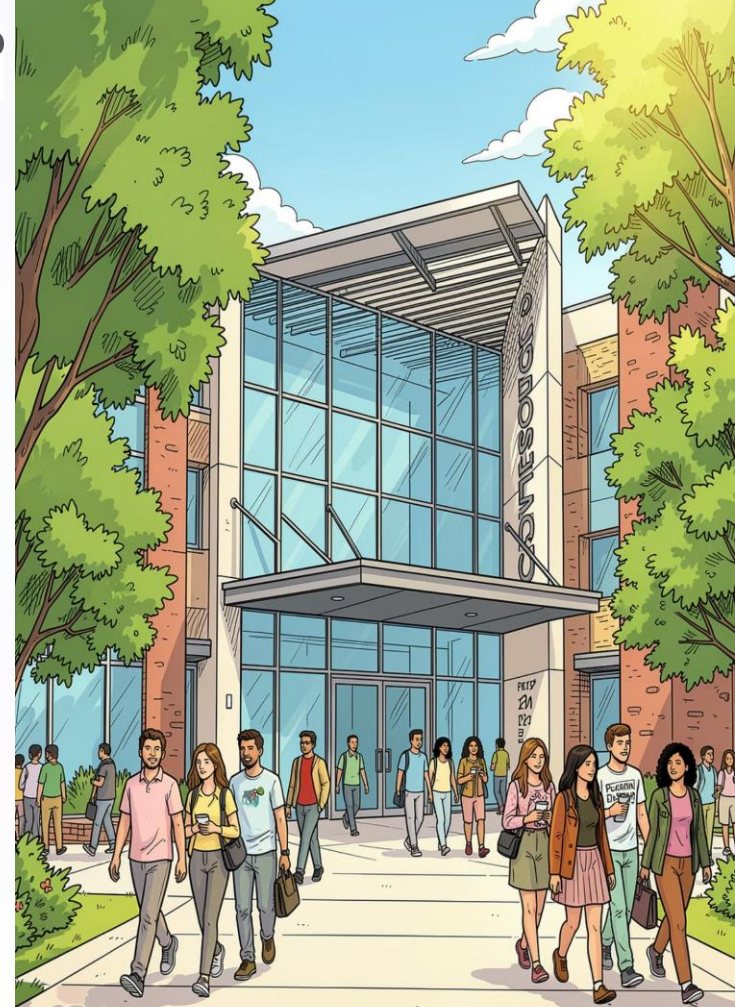
Email

info@contempocollege.edu.au

Web

www.contempocollege.edu.au

 **Office Hours:** 8:00am – 5:00pm, Monday to Friday.



Visas & Enrolment



Applying for Your Student Visa

You'll need a valid passport, an electronic Confirmation of Enrolment (eCoE), and documentation required by the Australian Diplomatic Post. Processing can take time, so apply early.

- Most students apply online or via their local Australian Diplomatic Mission
- Migration agents can assist but are **not required**
- Education agents are **not licensed** to provide migration advice

⚠ Breaching visa conditions may result in cancellation by the Department of Home Affairs (DHA).

Welcome to Perth

The City

Perth is one of Australia's most beautiful cities, with natural parklands, beach lifestyle, and the Swan River running through it. Free CAT buses (Red, Blue, Yellow routes) serve the CBD.

Climate

Mediterranean climate with more sunshine hours than any other Australian capital.

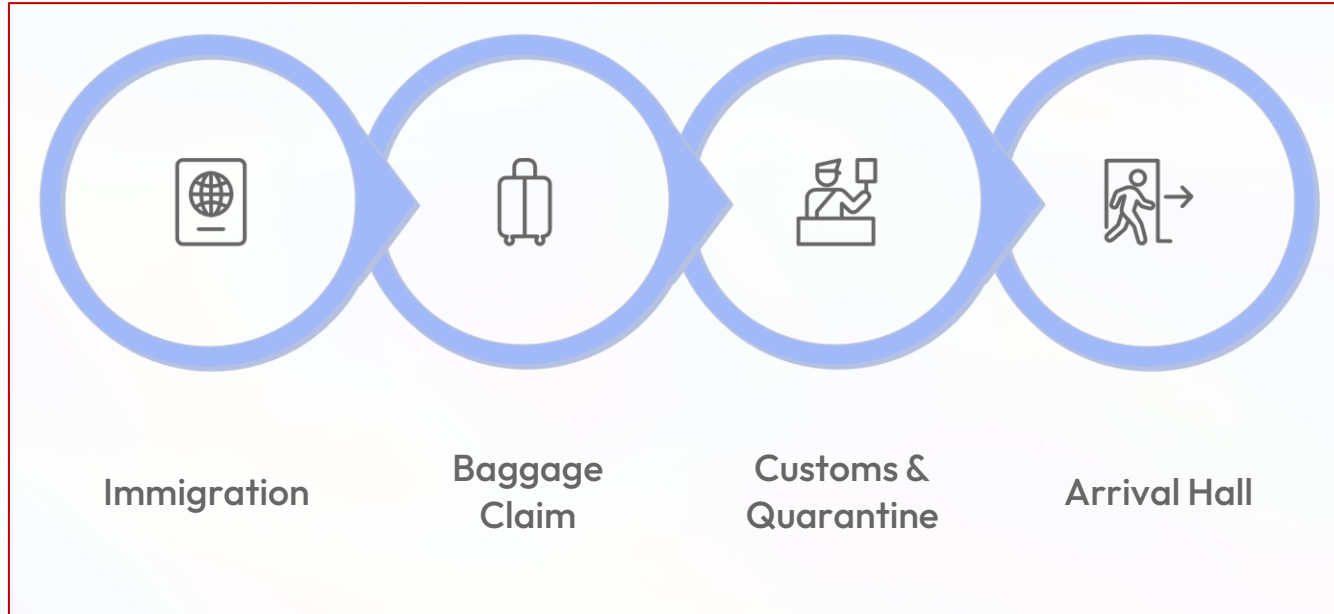
- Summer: Dec – Feb
 - Winter: Jun – Aug
- Arrive 1–2 weeks before orientation to adjust.

Airport Transfer

College pickup: \$150 (book 2 weeks ahead). Taxi to city: ~\$50 (30 min). Public buses, train and shuttle services also available from Perth International Airport.



Arriving in Australia



Every bag is screened. **Declare all food, plant material, and animal products** on your Incoming Passenger Card. Failure to declare can result in fines over **AU\$60,000** and up to 10 years in prison. If carrying over **AU\$10,000** in cash, you must also declare it.

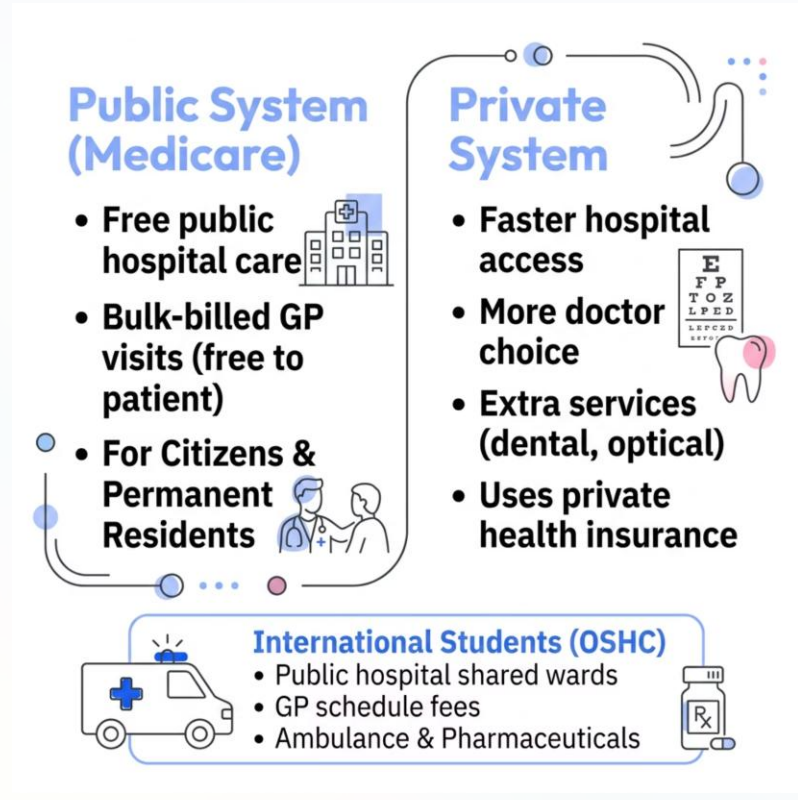
Health & OSHC

Overseas Student Health Cover (OSHC)

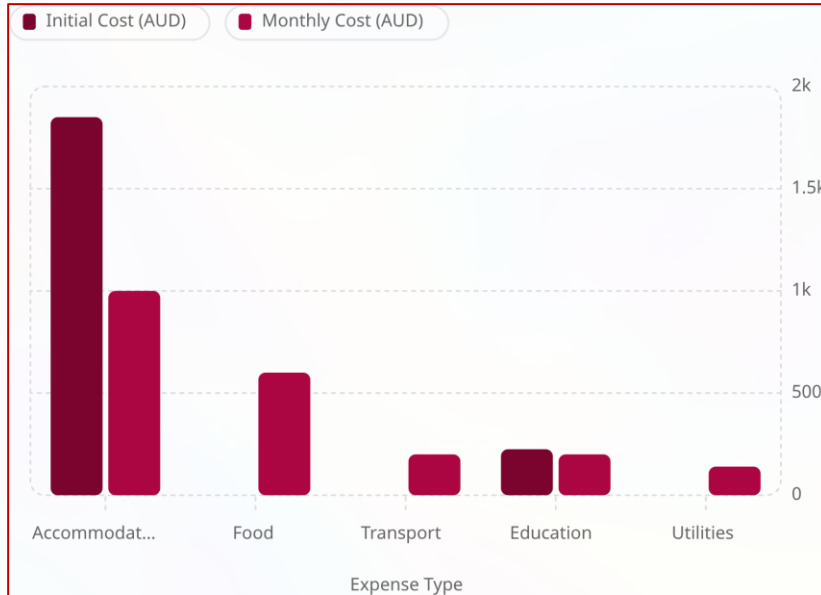
OSHC is **mandatory** for all international student visa holders. It covers medical and hospital care, emergency ambulance transport, and most prescription drugs.

- Show your OSHC card at medical centres
- Claim rebates for prescription medication over AU\$30.70
- Dental and optical require **extra cover**
- Make GP appointments in advance — call early (8:00–8:30am)

 Emergency? Dial **000** for Police, Fire, or Ambulance.



Managing Your Finances



Setting Up Your Bank Account

Open an account within **6 weeks** of arrival using your passport (100 points of ID). Many banks offer fee-free student accounts.

- Bring: passport, student ID, minimum \$10 deposit
- ATMs operate 24/7; bank branches: Mon–Fri, 9am–4pm
- Never share your PIN – banks will never ask for it
- Use EFTPOS, internet, or telephone banking to reduce fees

Working & Studying in Australia



Study Style

Australian education emphasises independent study, research, and active participation. Defend your arguments and engage in lectures.



Work Rights

Student visas include work permission. Work up to **40 hours per fortnight** during term; unlimited hours when your course is not in session.



Tax File Number

Apply for a TFN at **ato.gov.au** before starting work. Without it, you'll be taxed at the highest rate. Apply online or call 13 28 61.



Superannuation

If you earn over AU\$450/month, your employer contributes 9.5% to a super fund. You can claim it when you permanently leave Australia.



Staying Safe in Australia

Emergencies

Dial **000** for Police, Fire, or Ambulance. Non-emergency police: 131 444. Lifeline (24/7 counselling): 13 11 14.

Sun & Beach Safety

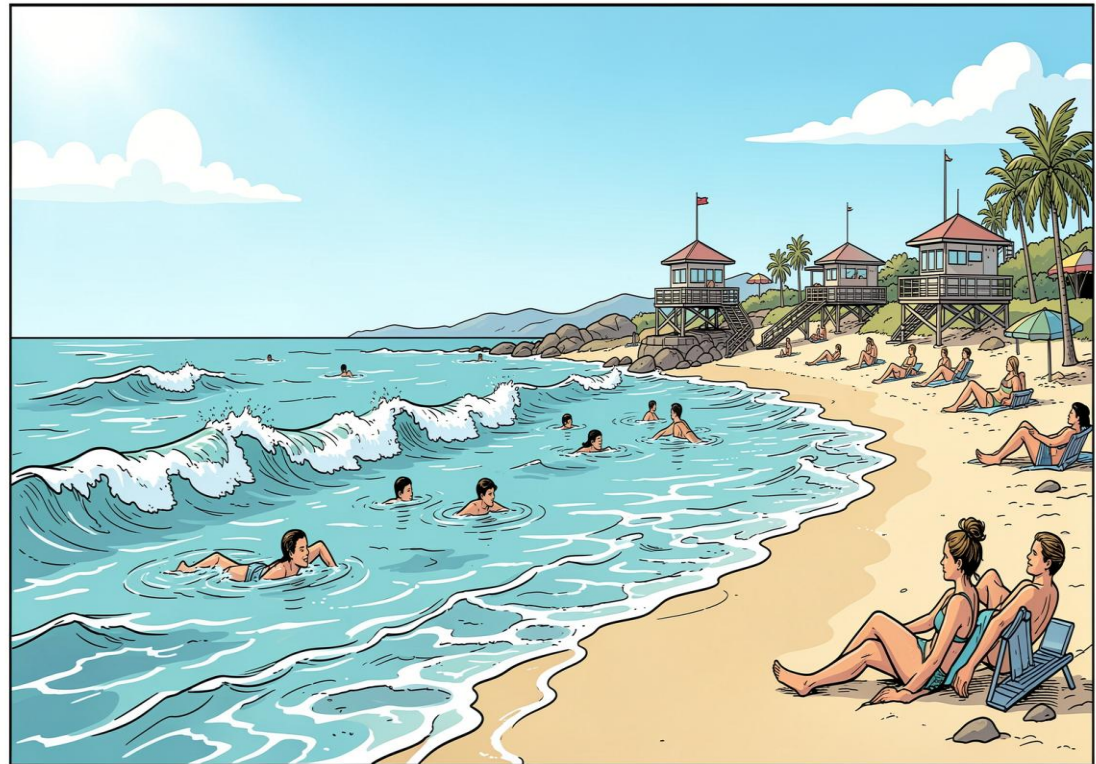
Australia has the world's highest skin cancer rate. Use SPF 30+, seek shade 10am–3pm. Swim between red and yellow flags only.

Alcohol & Driving

Legal drinking age is 18. BAC limit is 0.05. **Don't drink and drive** — at 0.05% BAC, accident risk doubles.

Home & Personal Safety

Keep doors locked. Don't carry large cash. Install antivirus software. Never hitchhike. Stay in well-lit areas at night.



Settling In & Key Reminders



Accommodation

Options include Homestay (via AHN), share accommodation (\$150–\$350/week), or full rental (\$600–\$800/week). Organise before arrival.



Making Friends

Join campus groups and community activities. Be open to new experiences. Always meet new people in public places first.



Public Holidays

Key dates: Australia Day (Jan 26), Anzac Day (Apr 25), Christmas (Dec 25). Most shops and transport operate in cities on holidays.



Remember: Orientation is compulsory. Contact Student Services for support with accommodation, learning needs, or any personal issues. You're not alone — help is always available.